



Parentline NI delivers the Regional Parents Support Helpline throughout Northern Ireland.

Our Helpline continues to operate as normal while keeping our staff safe at home.



Opening Hours

Mon - Thurs 9am - 9pm
Friday 9am - 5pm
Saturday 9am-1pm.



We offer webchat on
www.ci-ni.org.uk or
email parentline@ci-ni.org.uk.

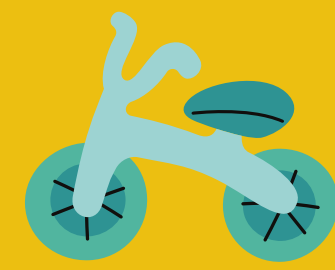


We continue to facilitate face to face support via numerous online platforms



Our top five parenting issues are present are:

- Parenting throughout a Pandemic
- Co-Parenting
- Addiction
- Challenging Behaviour
- COVID-19 and Childcare



Along with our partners we are a point of contact for the Government's Bespoke Childcare Scheme. We continue to support parents and gather their feedback, reporting this directly to the relevant bodies on a daily basis. Please continue to signpost parents who are struggling to source childcare to Parentline NI.

Parentline continues to accept referrals from professionals, please email referrals to parentline@ci-ni.org.uk



We would like to thank our Partners who have supported our Helpline throughout this time - Early years, Employers for Childcare, Relate NI and Helplines NI. Helplines have never been more essential and we continue to support Parents, Carers and professionals throughout Northern Ireland.